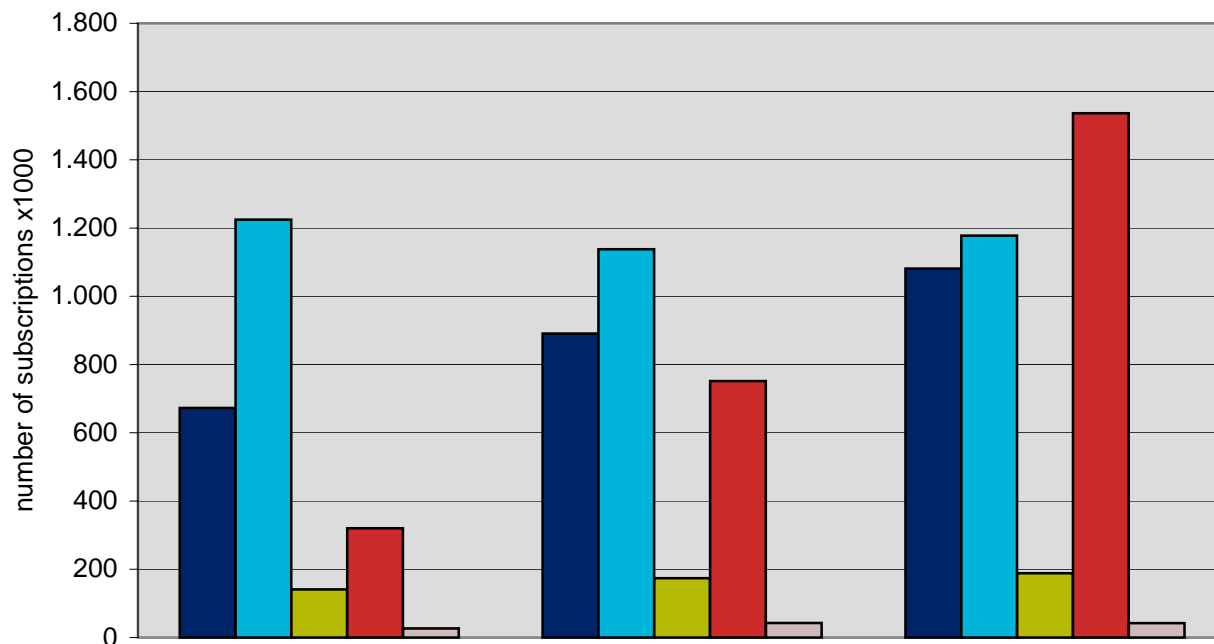




Multiplay: Dual, triple and quadruple play customers



	30-06-2006	31-12-2006	30-06-2007	Change 07Q2/06Q2
■ Triple Play: Customers with rtv + fixed telephony + broadband from same provider	673.000	891.000	1.081.000	60,7%
■ Dual Play: Customers with rtv + broadband from same provider	1.225.000	1.138.000	1.178.000	-3,8%
■ Dual Play: Customers with rtv + fixed telephony from same provider	141.000	174.000	189.000	33,5%
■ Dual Play: Customers with fixed telephony + broadband from same provider	320.000	752.000	1.536.000	379,9%
■ Quadruple Play: Customers with rtv + fixed and mobile telephony + broadband from same provider	27.000	43.000	42.000	57,2%