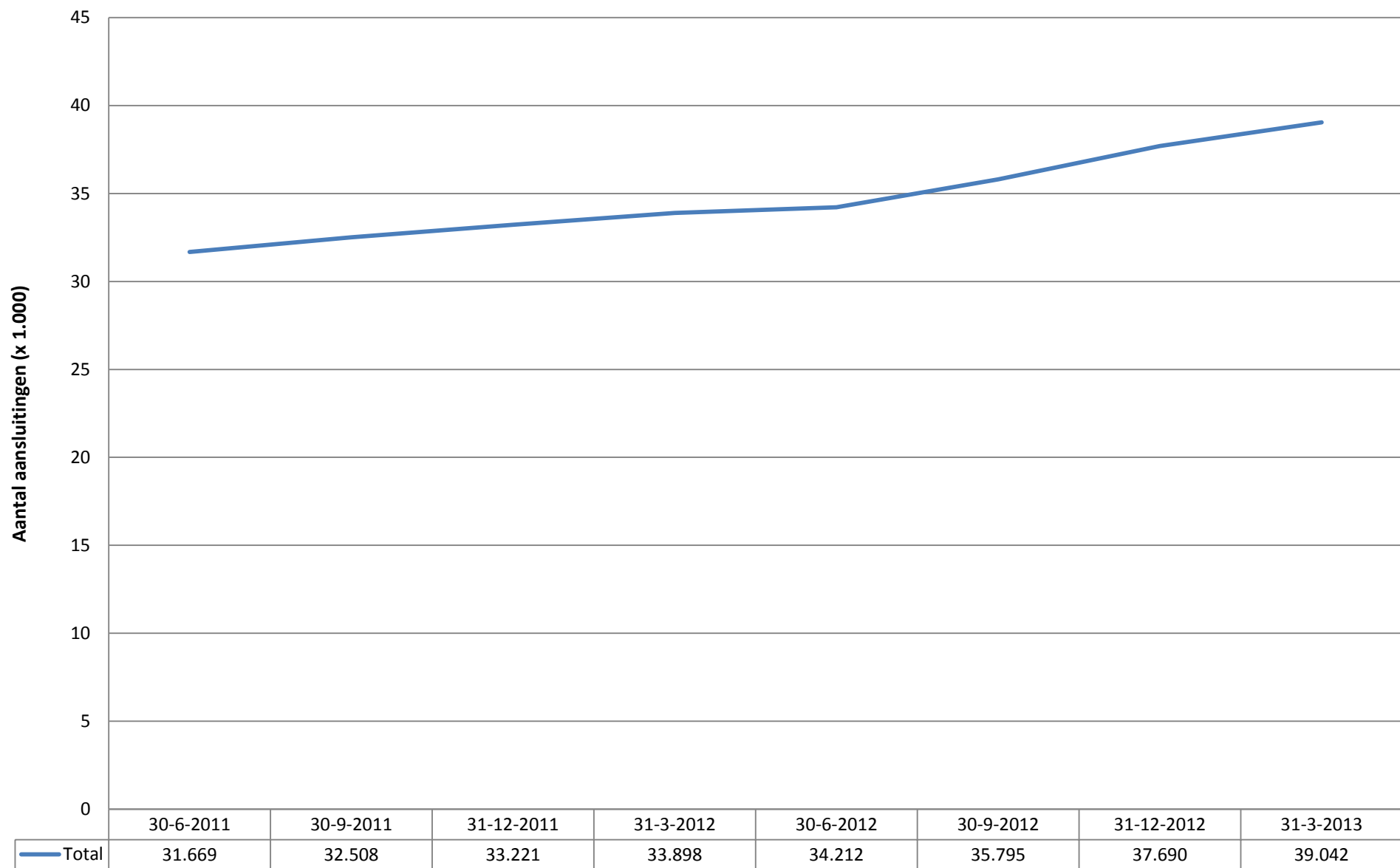




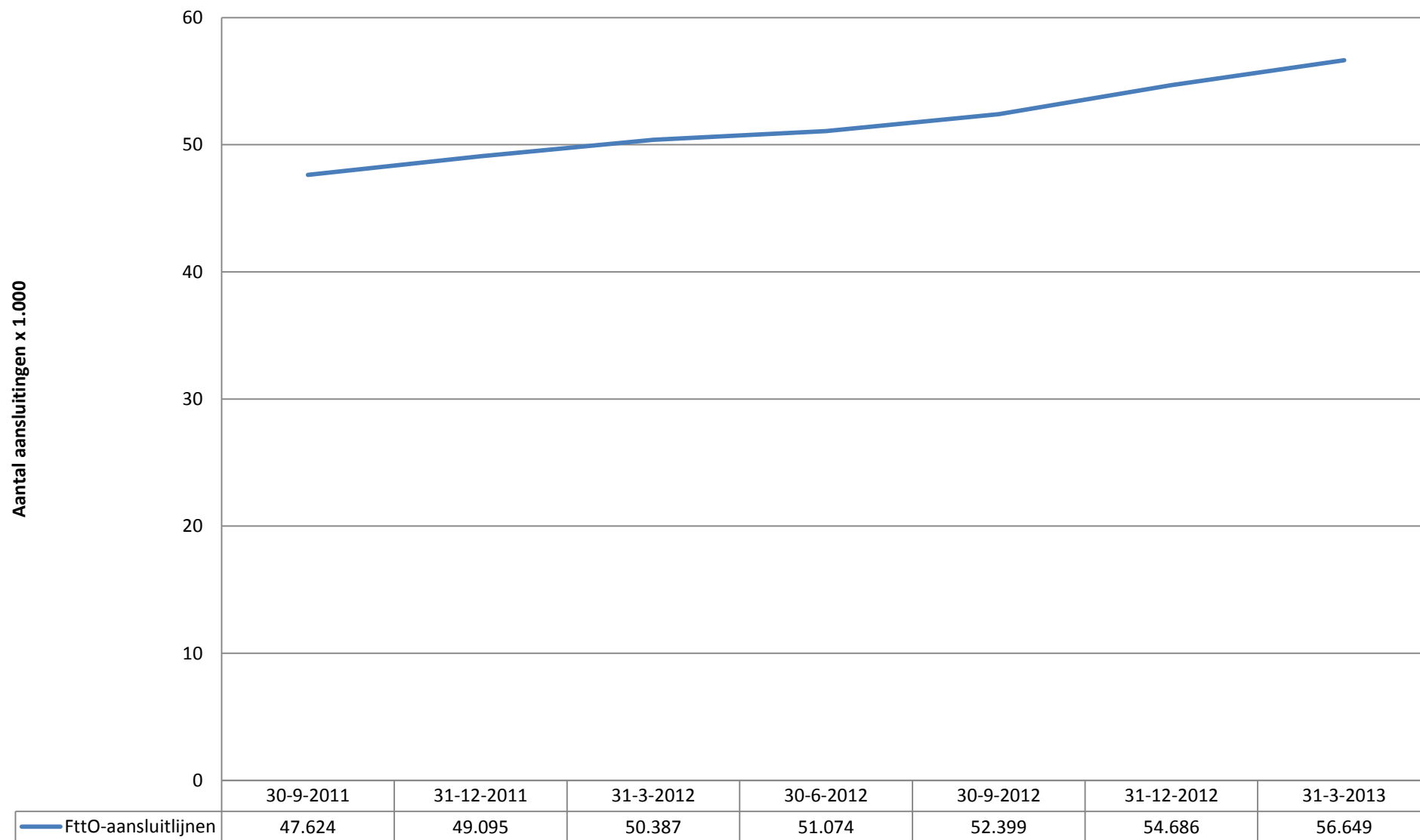
Breedband en huurlijnen: Retail zakelijke actieve glasaansluitingen



Op basis van gegevens van AT T, BBNED, BT, COLT, DELTA, EASYNET, EUROFIBER, KPN, TELE2, UPC BUSINESS, VERIZON, VODAFONE en ZIGGO. Op basis van indicatoren 4_A_1_1 van de SMM.



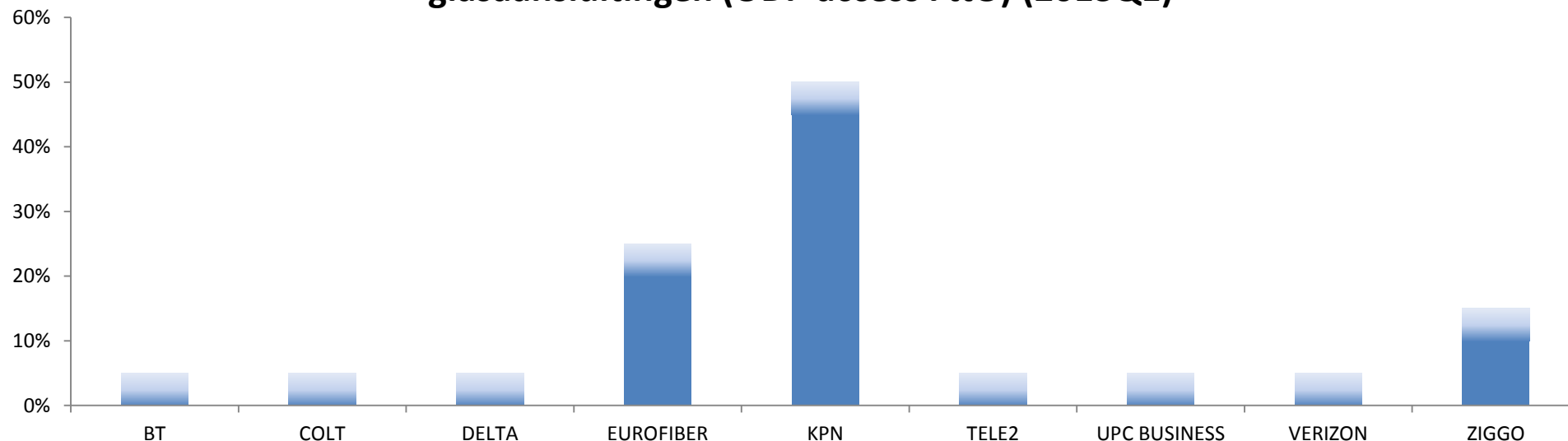
Breedband en huurlijnen: Wholesale zakelijke glasaansluitlijnen (ODF-access FttO)



Op basis van gegevens van AT T, BBNED, BT, COLT, DELTA, EASYNET, EUROFIBER, KPN, TELE2, UPC BUSINESS, VERIZON, VODAFONE en ZIGGO. Op basis van indicatoren 4_A_1_1-2, 4_E_8_1-3, 4_B_2_9 en 4_F_9_10 van de SMM.



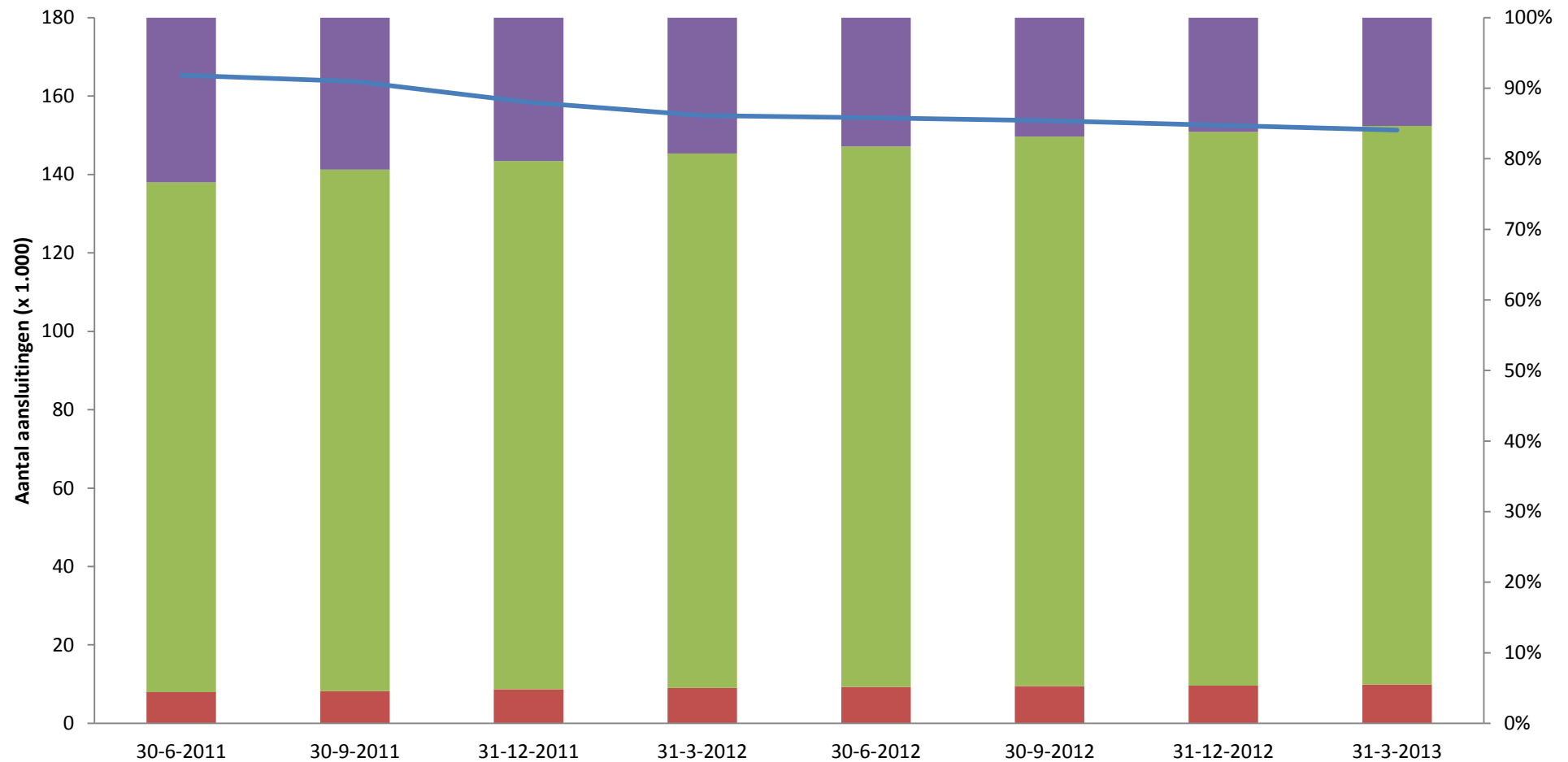
Breedband en huurlijnen: Marktaandelen op basis van wholesale zakelijke glasaansluitingen (ODF-access FttO) (2013Q1)



	30-6-2011	31-12-2011	31-3-2012	30-6-2012	30-9-2012	31-12-2012	31-3-2013
BT	[5-10%]	[5-10%]	[5-10%]	[5-10%]	[5-10%]	[0-5%]	[0-5%]
COLT	[0-5%]	[0-5%]	[0-5%]	[0-5%]	[0-5%]	[0-5%]	[0-5%]
DELTA	[0-5%]	[0-5%]	[0-5%]	[0-5%]	[0-5%]	[0-5%]	[0-5%]
EUROFIBER	[20-25%]	[20-25%]	[20-25%]	[20-25%]	[20-25%]	[20-25%]	[20-25%]
KPN	[45-50%]	[45-50%]	[45-50%]	[45-50%]	[45-50%]	[45-50%]	[45-50%]
TELE2	[5-10%]	[5-10%]	[5-10%]	[0-5%]	[0-5%]	[0-5%]	[0-5%]
UPC BUSINESS	[0-5%]	[0-5%]	[0-5%]	[0-5%]	[0-5%]	[0-5%]	[0-5%]
VERIZON	[0-5%]	[0-5%]	[0-5%]	[0-5%]	[0-5%]	[0-5%]	[0-5%]
ZIGGO	[10-15%]	[10-15%]	[10-15%]	[10-15%]	[10-15%]	[10-15%]	[10-15%]



Breedband en huurlijnen: Retail zakelijke netwerkdiensten

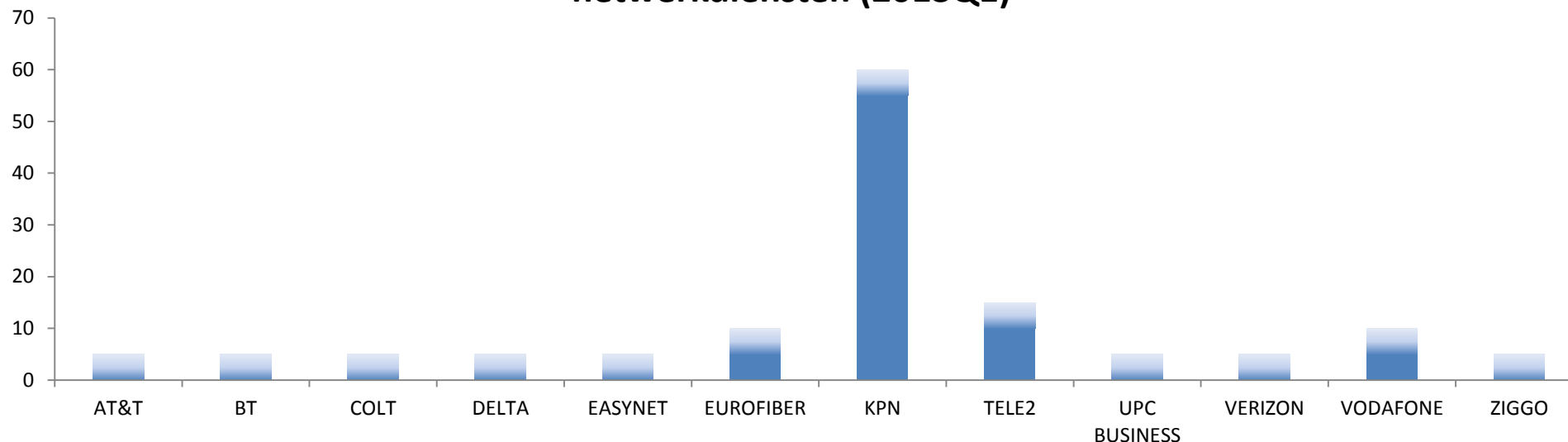


	30-6-2011	30-9-2011	31-12-2011	31-3-2012	30-6-2012	30-9-2012	31-12-2012	31-3-2013
Klassieke huurlijnen	23%	22%	20%	19%	18%	17%	16%	15%
Datacom	72%	74%	75%	76%	77%	78%	78%	79%
Dark fiber	4%	5%	5%	5%	5%	5%	5%	6%
Zakelijke netwerkdiensten (x 1.000)	165	164	158	155	154	154	153	151

Op basis van gegevens van AT T, BBNED, BT, COLT, DELTA, EASYNET, EUROFIBER, KPN, TELE2, UPC BUSINESS, VERIZON, VODAFONE en ZIGGO. Op basis van indicatoren 4_B_2_1-2-3-4-6-7-8-9 en 4_C_4_1-2 van de SMM.



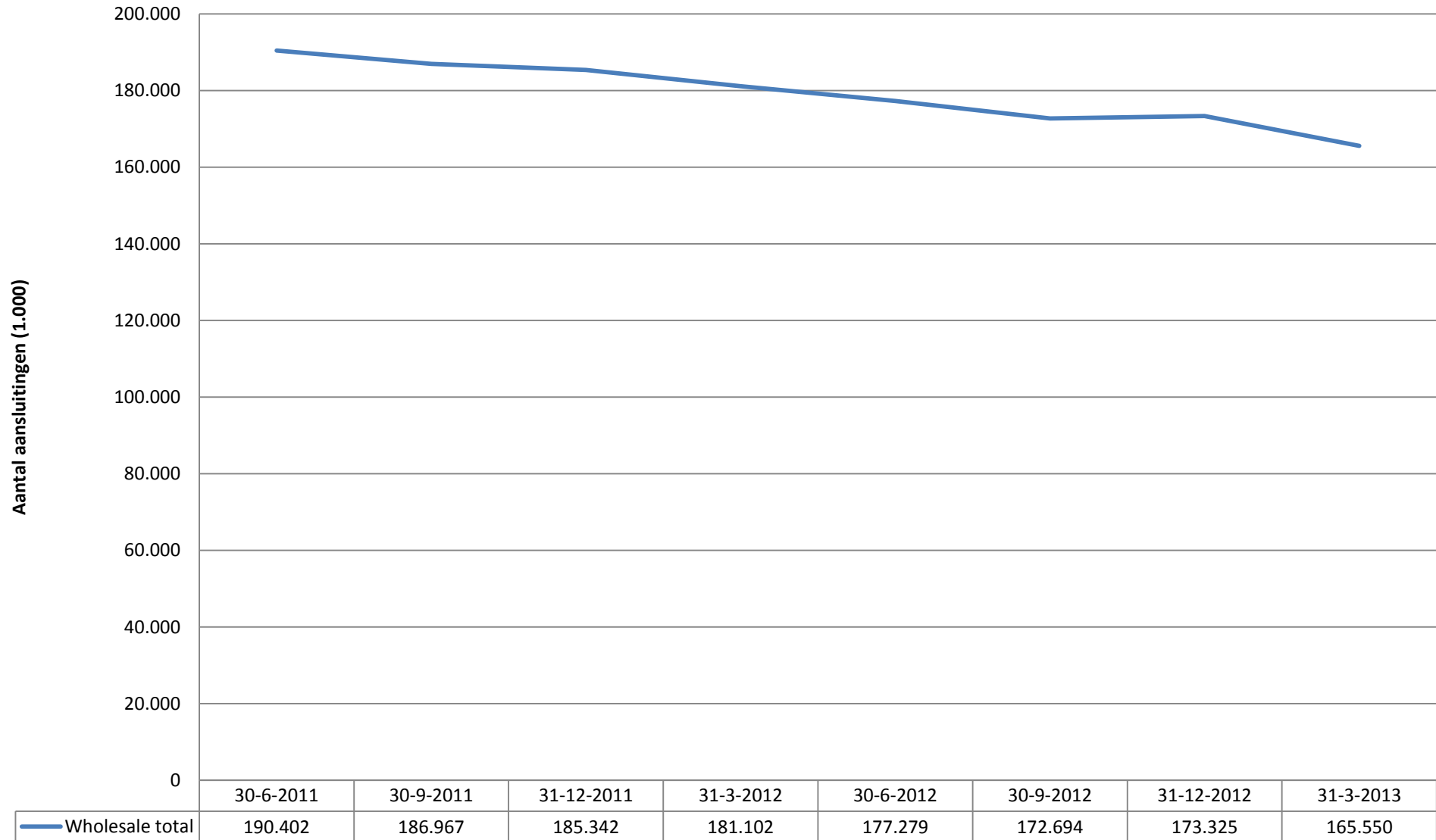
Breedband en huurlijnen: Marktaandelen op basis van retail zakelijke netwerkdiensten (2013Q1)



	30-6-2011	30-9-2011	31-12-2011	31-3-2012	30-6-2012	30-9-2012	31-12-2012	31-3-2013
AT&T	[0-5%]	[0-5%]	[0-5%]	[0-5%]	[0-5%]	[0-5%]	[0-5%]	[0-5%]
BT	[0-5%]	[0-5%]	[0-5%]	[0-5%]	[0-5%]	[0-5%]	[0-5%]	[0-5%]
COLT	[0-5%]	[0-5%]	[0-5%]	[0-5%]	[0-5%]	[0-5%]	[0-5%]	[0-5%]
DELTA	[0-5%]	[0-5%]	[0-5%]	[0-5%]	[0-5%]	[0-5%]	[0-5%]	[0-5%]
EASYNET	[0-5%]	[0-5%]	[0-5%]	[0-5%]	[0-5%]	[0-5%]	[0-5%]	[0-5%]
EUROFIBER	[0-5%]	[0-5%]	[5-10%]	[5-10%]	[5-10%]	[5-10%]	[5-10%]	[5-10%]
KPN	[55-60%]	[55-60%]	[55-60%]	[55-60%]	[55-60%]	[55-60%]	[55-60%]	[55-60%]
TELE2	[10-15%]	[10-15%]	[10-15%]	[10-15%]	[10-15%]	[10-15%]	[10-15%]	[10-15%]
UPC BUSINESS	[0-5%]	[0-5%]	[0-5%]	[0-5%]	[0-5%]	[0-5%]	[0-5%]	[0-5%]
VERIZON	[0-5%]	[0-5%]	[0-5%]	[0-5%]	[0-5%]	[0-5%]	[0-5%]	[0-5%]
VODAFONE	[5-10%]	[5-10%]	[5-10%]	[5-10%]	[5-10%]	[5-10%]	[5-10%]	[5-10%]
ZIGGO	[0-5%]	[0-5%]	[0-5%]	[0-5%]	[0-5%]	[0-5%]	[0-5%]	[0-5%]



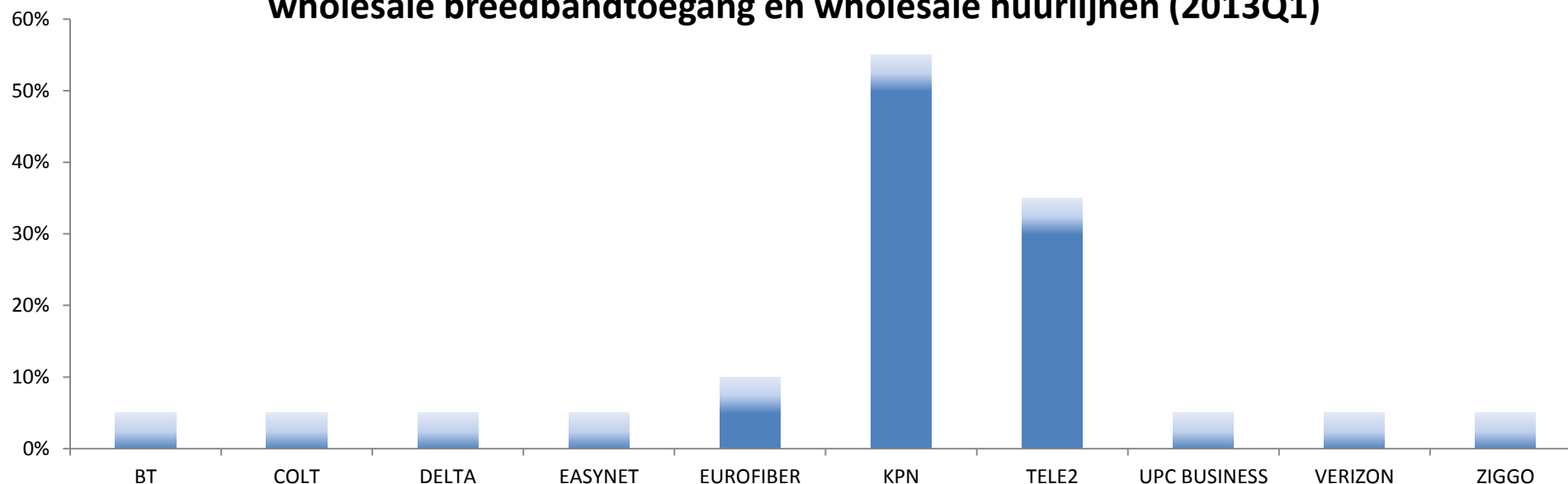
Breedband en huurlijnen: Hoge kwaliteit wholesale breedbandtoegang en wholesale huurlijnen



Op basis van cijfers van AT T, BBNED, BT, COLT, DELTA, EASYNET, EUROFIBER, KPN, TELE2, UPC BUSINESS, VERIZON, VODAFONE en ZIGGO. Op basis van indicatoren 3_A_2_2_5, 3_A_2_3_1/3, 4_B_2_1-9, 4_F_9_1_a/e, _9_2_1/4, _9_6_a/c, _9_7_1-2, _9_10 van de SMM.



Breedband en huurlijnen: Marktaandelen op basis van hoge kwaliteit wholesale breedbandtoegang en wholesale huurlijnen (2013Q1)



	30-6-2011	30-9-2011	31-12-2011	31-3-2012	30-6-2012	30-9-2012	31-12-2012	31-3-2013
BT	[0-5%]	[0-5%]	[0-5%]	[0-5%]	[0-5%]	[0-5%]	[0-5%]	[0-5%]
COLT	[0-5%]	[0-5%]	[0-5%]	[0-5%]	[0-5%]	[0-5%]	[0-5%]	[0-5%]
DELTA	[0-5%]	[0-5%]	[0-5%]	[0-5%]	[0-5%]	[0-5%]	[0-5%]	[0-5%]
EASYNET	[0-5%]	[0-5%]	[0-5%]	[0-5%]	[0-5%]	[0-5%]	[0-5%]	[0-5%]
EUROFIBER	[0-5%]	[5-10%]	[5-10%]	[5-10%]	[5-10%]	[5-10%]	[5-10%]	[5-10%]
KPN	[55-60%]	[55-60%]	[55-60%]	[55-60%]	[55-60%]	[55-60%]	[55-60%]	[50-55%]
TELE2	[30-35%]	[30-35%]	[30-35%]	[30-35%]	[30-35%]	[30-35%]	[30-35%]	[30-35%]
UPC BUSINESS	[0-5%]	[0-5%]	[0-5%]	[0-5%]	[0-5%]	[0-5%]	[0-5%]	[0-5%]
VERIZON	[0-5%]	[0-5%]	[0-5%]	[0-5%]	[0-5%]	[0-5%]	[0-5%]	[0-5%]
ZIGGO	[0-5%]	[0-5%]	[0-5%]	[0-5%]	[0-5%]	[0-5%]	[0-5%]	[0-5%]